


Luxury Lifestyle Homes



2 BHK Luxury Apartments • Near Chaphekar Chowk, Chinchwad



The
Glitter
of
City
Life



Fulfilling the aspirations of its dwellers, Chinchwad is an ever-changing city, Chaphekar Chowk is a hub of all the happenings in the town. Living in a posh locality like Tanaji Nagar comes with countless advantages. Situated right opposite Shivaji Uday Mandal with plenty of natural light and fresh air in uncluttered surroundings. Need we say more how convenient it is going to be...

We are presenting you with a project that complements the upmarket lifestyle in a bustling prime locality. A project with ultra-modern amenities, 'Kalpataru' offers all the warmth and cosiness any home needs.

Step into your home and leave the city behind. The building accommodates unique features that make life easier and luxurious.

Welcome to 'Kalpataru' your new home.



Spacious and well ventilated 2 BHK flat layout.

AREA STATEMENT IN METERS

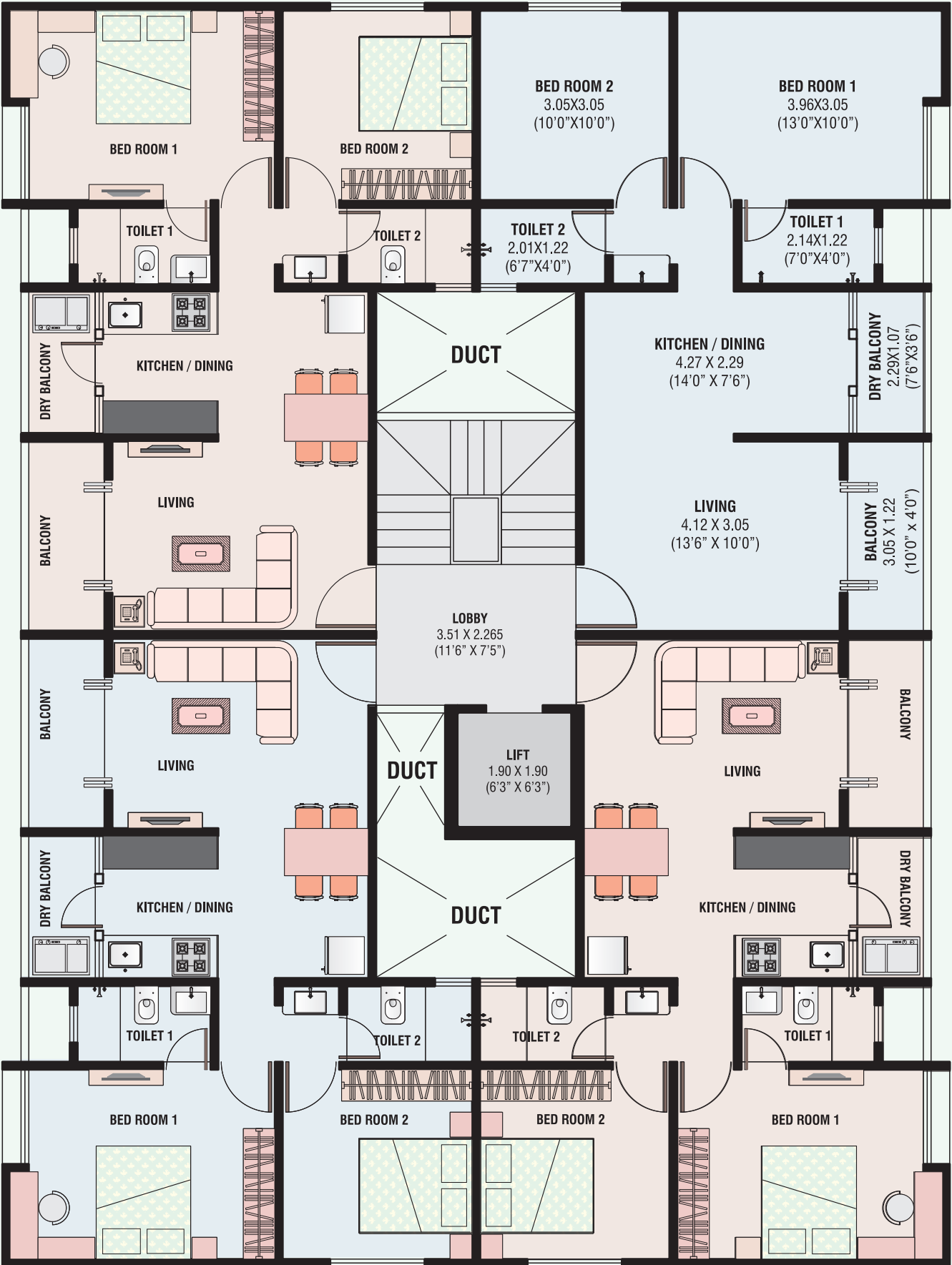
Flat No.	Flat Type	Flat Area	Balcony Area	Carpet Area
101	2 BHK	54.98	6.17	61.15 (658 SQ.FT.)
102	2 BHK	54.98	6.17	61.15 (658 SQ.FT.)
103	2 BHK	54.98	6.17	61.15 (658SQ.FT.)
104	2 BHK	54.98	6.17	61.15 (658 SQ.FT)

102
202
302
402
502

103
203
303
403
503

101
201
301
401
501

104
204
304
404
504



ROAD



SPECIFICATIONS

R.C.C.

- Earthquake resistant structure

Brickwork

- Internal & External Brickwork/ Blockwork

Plaster

- External sand-faced & internal gypsum finished

Water Proofing

- Terrace and washroom waterproofing

Doors

- Main door
- Bedroom door
- Sliding doors for terraces
- Flush doors for toilets

Windows

- 3 track windows with mosquito mesh
- Safety grills & sill

Kitchen

- Granite kitchen platform with stainless steel sink
- Wall tiles
- Provision for water purifier
- Provision for exhaust fans

Toilets & Bathrooms

- Hot & cold mixer unit
- Concealed plumbing
- Glazed tile dado
- Standard toilet fitting
- Provision for exhaust fans
- Wall hung commode

Flooring

- Vitrified tile flooring
- Anti-skid tiles in toilets & terraces

Electrification

- Concealed copper wiring with standard switches and fire resistance wire (ISI mark)
- Provision for AC point in Master Bedroom
- T.V. and Telephone point in Living and Master Bedroom
- Adequate electrical points in every room
- Provision for inverter

Painting

- Internal- Oil bound distemper
- External- Acrylic paint



AMENITIES

- Grand entrance gate.
- Compound wall with green plantation along the Periphery.
- Well lit and internal concrete roads.
- Checkered tiles or paving blocks for parking.
- Rain water harvesting.
- Automatic lifts.
- Generator / Battery backup for lifts and common lights.
- Bore well system
- Solar water heating system



Site Address:

CTS No. I308, Plot No. 282/59, Opp. Shivaji Uday Mandal, Tanaji Nagar,
Chinchwad, Pune 411033

Sales:

9730006662
9049906661



Opp. Shivaji Uday Mandal Ground
Chaphekar chowk : 850m
Elpro Mall : 550m
Elpro international school : 750m
Talera Hospital : 400m
Chinchwad Station : 2.2 Km
Chinchwad Gaon Bus Stand: 500m



ISHAN
Construction



MAHA RERA REGISTRATION NUMBER
P52100046047

Details of the project can be verified on the MAHA RERA website:
<https://maharera.mahaonline.gov.in/searchlist/search>

Office Address:
401, Karan Vitoria, Café Good Luck Lane,
Deccan Gymkhana, Pune 411004